

FACT SHEET

AWARE™ **ASSET PERFORMANCE MANAGEMENT (APM)**

Software solutions for your facility inspection data management and Risk-Based Inspection (RBI) needs

Designed and built for facility owners and operators of complex equipment to extend the life of their assets.



Aware™ – Asset Performance Management (APM) Software

Aware is a complete asset integrity management solution used for mechanical integrity and to perform Risk-Based Inspection (RBI) analysis based on the API 580 and 581 Recommended Practices.

Our advanced and industry-proven inspection data management system (IDMS) provides a full range of capacities to organize asset inspection information and reduce downtime.

Aware for the petrochemical industry organizes stores, analyzes, and reports the inspection information for assets such as piping, pressure vessels, safety relief devices, valves, tanks, and other process equipment.

Aware advanced solutions provide advantages for performance management, safety and the life of facility assets within a wide range of sectors such as:

- Refining
- Midstream
- Mining
- Power
- Chemical
- Exploration & Production
- Pipeline

Advanced Controls. Operations Optimization.

Aware uses configured dashboards to visualize, track and provide data analyses and key performance indicators using inspection data information, engineering data, remaining useful life estimations and corrosion monitoring.

- User definable graphical widgets with drag-and-drop layout functions
- User definable dashboards and charts for individual users
- Standard Key Performance Indicators (KPI) dashboards configured for asset condition, risk and status
- Graphical chart information filtering for data screens and condition lists



Mobile Aware



Our cutting edge and technologically advanced solutions help companies maintain equipment reliability and safety, determine equipment remaining useful life estimations, and manage inspection data.



Dashboard with KPIs

Key Features

Total Digital Solution: A total digital platform creates the information foundation from data collection in the field using tablets and phones through to data review, assigning and tracking anomalies and workorders.

Inspection Planning: Evaluates and tracks the next inspection date for all assets using the multiple criteria including code interval, override interval, max inspection interval, half-life, remaining life, RBI, Out-of-Service status, and user input.

Anomaly Tracking: Anomalies captured during inspections are continuously monitored and tracked. Color-coded KPIs display a clear indication of the status of the anomalies.

Corrosion Management: T-Min, STCR, LTRC, remaining life and half-life are calculated based on the most recent data sets and form the basis of reports for the next inspection date evaluation.

RBI Analysis: Aware software offers tools for RBI analysis using qualitative, semi-quantitative and fully quantitative methodologies.

Context-Sensitive Information: Seamlessly track the life cycle of each asset, including engineering, design, inspection history, risk, retrofits, repairs, and replacements.

Data Flexibility: Any type of file can be stored including documents (any format), multimedia, pictures, application-specific data, etc. and interfaces with Document Management Systems to avoid data duplication.

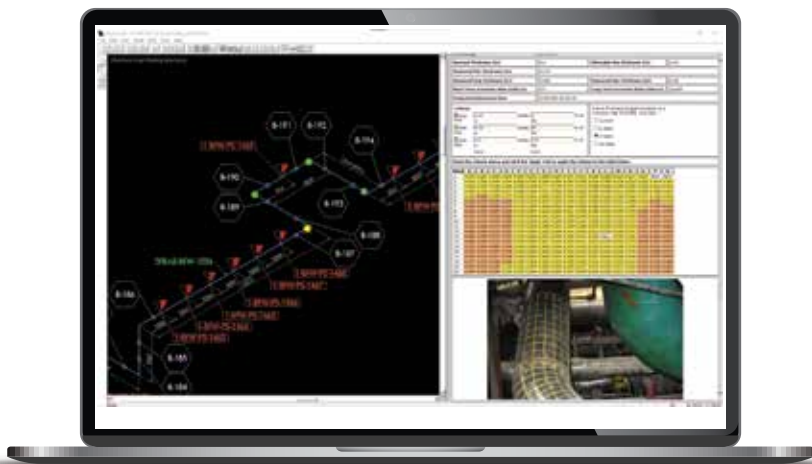
Graphic Interface: Overlay critical design and inspection data on CAD drawings or 3D scanned point cloud models to enhance visual analysis.

Interface with EAM: Create and monitor workorders in EAM (Maximo, SAP, etc.)

Integrate with Corporate BI or Portals: This feature is available using standards-based RESTful APIs to link to corporate reporting platforms.

Additional Aware features include:

- Mobile Aware module for tablets, phones and portable devices
- Graphing and trending KPI
- Customized dashboards and reports
- Alerts and notifications
- Role-based user security for set level facility and third-party access



Piping UT

FOR MORE INFORMATION

+1 408 355 7020

aware.sales@intertek.com

intertek.com/aware