

**ENVIRONMENTAL  
SERVICES**

**INDONESIA**



# TOTAL QUALITY. ASSURED.

For more than 130 years, companies around the world have depended on Intertek to help ensure the quality and safety of their products, processes and systems.

Intertek is a leading Total Quality Assurance provider to industries worldwide. Our network of more than 1,000 locations and offices and over 44,000 people in more than 100 countries, delivers innovative and bespoke Assurance, Testing, Inspection and Certification solutions for our customers' operations and supply chains. Intertek supports companies' success in the global marketplace, by helping customers to meet end users' expectations for safety, sustainability, performance, integrity and desirability in virtually any market worldwide.

Intertek's Environmental Division is highly regarded as a leader in providing high quality data and dedicated customer support. We provide environmental chemistry knowledge and valuable support for client projects.

## Water Quality Monitoring

Water quality testing is conducted for a variety of reasons. For example one may wish to know of preexisting environmental conditions at a site before commencing operations. Or one may need to comply with discharge limits for their wastewater.

## Emissions testing services

Emissions testing can be challenging because of the extreme conditions within a stack. Sample extraction for particulate matter must be conducted at the identical pressure

and flow rate existing within the stack at any given moment. Gases can either be measured directly or must be absorbed into solution for further analysis back at the laboratory.

## Waste Analysis & Characterization

A variety of tests has been developed to characterize waste in order to determine if treatment is necessary before discharge to the environment. Tests range from determinations of toxicity of materials to simulations of landfill conditions to determine the potential for the waste to leach out contaminants.

## Bioaccumulation

The determination of toxic residues in organisms populating a contaminated area is an important part of the ecological risk

assessment process. Biological samples may be an indicator of contamination that is affecting the food chain and possibly humans.

## Acid Rock Drainage (ARD) Prediction

Intertek offers a variety of tests to characterize the potential for rock and soil to generate acid, allowing companies to mitigate impacts by developing waste management strategies.

## Indoor air quality & industrial hygiene monitoring services

Protection of workers from occupational health hazards is crucial to maintaining a company's productivity and staff morale, ensuring regulatory compliance, and minimizing liability.



# Why Choose Intertek?

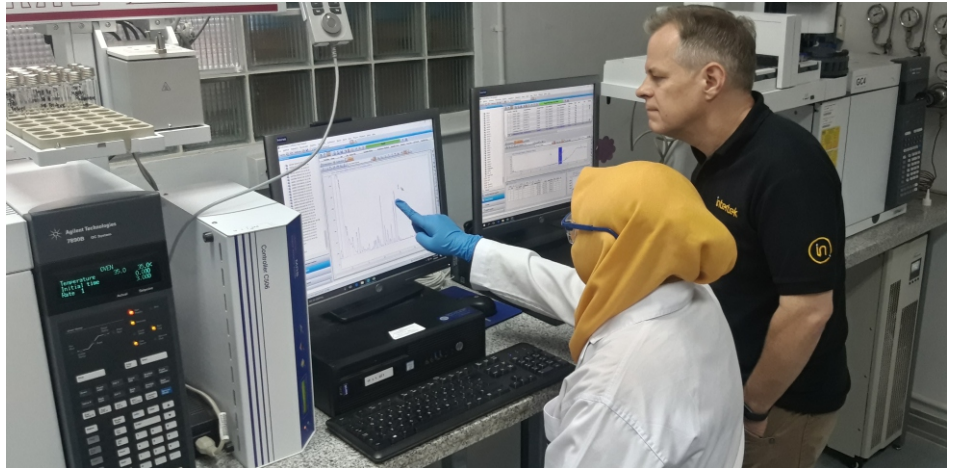
Environmental data must be legally defensible  
Intertek has a very strict Quality Assurance/Quality Control (QA/QC) program

With so many laboratories in Indonesia claiming to offer environmental testing services we stand out above the crowd. Every 3 months since 2007, our technicians are tested amongst their peers in the USA in order to evaluate their analytical performance.

Our data report reviewers have years of experience carefully evaluating many sample types: fresh water, seawater, wastewater, soil, sediment, air, biological tissue, amongst others. Each matrix has its own particular characteristics and our staff have developed the ability to see when "something doesn't look right" amongst the numbers and then verify and alert clients.

But it costs money to be able to offer these important benefits. We must import quality control check samples, ultra-pure chemicals, instrumentation and laboratory consumables. Intertek also invests heavily in technical staff training and certification. On the bright side we are less expensive than environmental labs in developed countries.

Many industries which rely on accurate laboratory data like to check the performance of the laboratory. They often do this by inserting blind check or reference samples into their field sample submissions. When companies perform this simple exercise, they can begin to separate environmental labs into high and low quality data providers



## Why Choose Us?

- Our clients invest considerable time and expense in order to have environmental samples collected from around their site (as part of their internal or external compliance policies). These individuals require accurate data in order to be able to identify and quantify potential liabilities and/or hazards to nearby communities. Through our participation in USA based laboratory proficiency testing we can guarantee a high degree of data integrity.
- We have a team of 4 client relations officers (CROs) who all have extensive familiarity with Indonesian environmental protection legislation. Through them we offer excellent customer support on their projects.
- We offer a wide variety of tests to our clients in an effort to become a "one stop shop" for their many needs.
- We acquire only analytical grade reagents for our sensitive "parts per billion" analyses and the highest standard of laboratory instrumentation.

- We have many years of experience working with international environmental consulting firms on baseline studies, environmental impact assessments, contaminated site cleanups and other sensitive monitoring projects. These consultants require high quality data in order to be able to spot trends, advise clients on which tests are needed and determine the most appropriate sampling points for future surveys.





- We have the most complete set of sampling equipment in the country for matrices such as, surface water, seawater, groundwater, soil, sediment, ambient air, indoor air, stack emissions, etc.
- Because we are a high integrity laboratory we are frequently used by the Ministry of Environment (KLHK) on various projects.

### Field Sample Collection & Onsite Monitoring Services

We have a full team of experienced field sampling technicians with up-to-date government certification. Intertek's environmental sampling technicians are capable of:

- Stationary source emissions sampling using isokinetic sampling equipment, gas analyzers and opacity meters.
- Ambient air/indoor air sampling using high volume air samplers, as well as battery powered low volume air samplers including in situ analyses using portable spectrophotometers.
- Noise measurement using sound level meters as well as personal noise dosimeters.
- Well/bore water sampling using bailer samplers/submersible pumps.
- Sea/river sediment sampling using ponar grab samplers.

- Seawater sampling using Van Dorn and Go Flo samplers.

Aside from emissions testing services our field technicians are also able to determine the accuracy of our clients' continuous emissions monitoring systems (CEMS) by performing Relative Accuracy Test Audits (RATA).

Each and every year our field samplers attend comprehensive workshops to refresh their sampling capabilities for the many matrix types they must collect.

### Our Accreditation

We are accredited SNI ISO/IEC 17025:2008 (ISO/IEC 17025:2005) by the National Accreditation Committee (KAN) for general requirements for the competence of testing and calibration laboratories. We are also registered with the Indonesian Ministry of Environment and Forestry as an Environmental Laboratory.

Accreditation is an important aspect for ensuring a laboratory follows correct methodology and uses appropriate instrumentation. But it does not guarantee continued high quality data. Clients must determine this for themselves by asking to see how the laboratory scores in recent inter-laboratory comparison studies (Round Robins).

### Our Equipment

- ICP-MS, Agilent 7900X
- GC-FID/PID, Varian GP 3800
- GC-MS/FPD/ECD, Agilent 7890 B
- Low level mercury analyzer, Analytik Jena - mercurie duo
- Carbon/sulfur analyzer, LECO Corp CS 2000
- FTIR spectrophotometer, Perkin Elmer & Wilks-Infracal 2
- TOC Analyzer, Sievers Innovox GE S/N 09040101
- Autotitrator, Metrohm 904 Titrando
- Ion chromatograph, Dionex ICS-2000
- Ambient air sampler, Staplex-USA
- USEPA method 5 - emissions sampler set, APEX Instrument
- USEPA method 17 - emissions sampler set, APEX instrument
- USEPA method 23 - emissions sampler set, APEX instrument
- USEPA method 26 - emissions sampler set, APEX Instrument
- Portable continuous emissions monitoring system, Horiba PG 350

Intertek carefully selects the most appropriate laboratory equipment. For example, for heavy metals in drinking water analysis we use an Inductively Coupled Plasma - Mass Spectrometry (ICP-MS) instead of an Atomic Absorption Spectrophotometer (AAS). AAS is not sensitive enough for some heavy metals testing. Our ICP-MS can measure levels 100 fold lower than an AAS instrument.





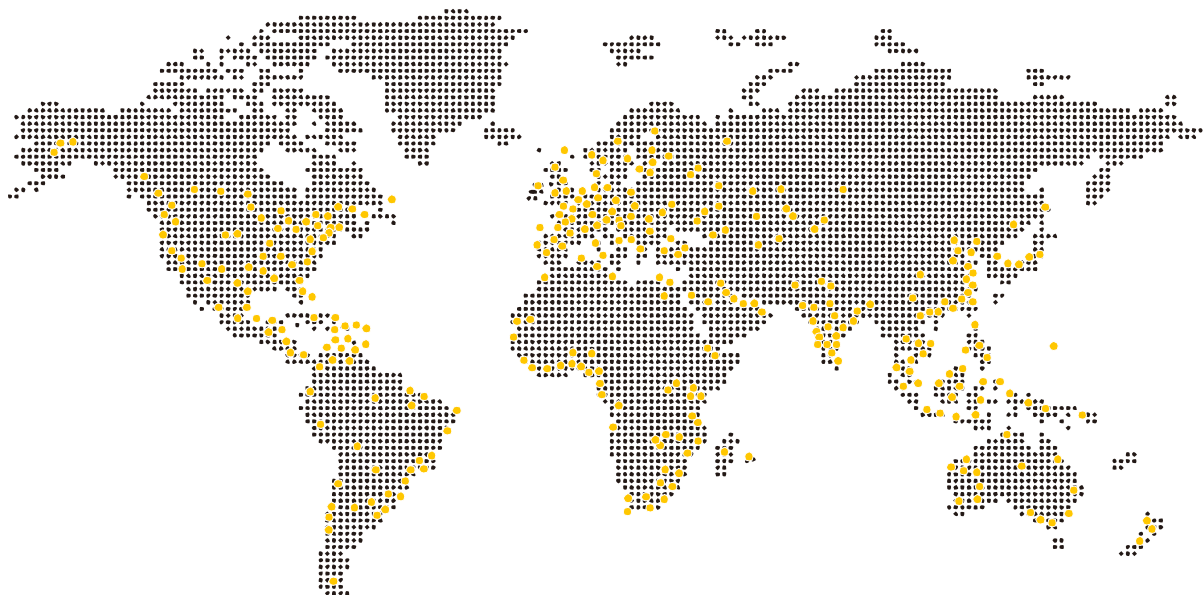
# Work with a partner you can trust

Intertek collaborates with and supports some of the most well-known brands and businesses around the globe, providing essential knowledge, discretion, and capability where and when our clients need it.

Our work helps ensure proper certification and greater market access, the ability to meet product performance and quality metrics, and the promotion and elevation of a brand's name and reputation. We improve the value proposition of our clients' products through the strength and robustness of our services, and, as a result, more and more new and well-known clients join the Intertek family all the time.

## Our Clients

- Mining
- Oil & Gas
- Power Generation
- Environmental Consulting Firms
- Ministry of Environment and Forestry (KLHK)
- Manufacturing
- Pharmaceutical
- Palm Oil
- Cement
- Refineries / Smelters





---

Indonesia  
Intertek

Jakarta  
Jl. Raya Bogor Km28  
Jakarta Timur 13710  
Indonesia

---



+6221 2938 4454



[indo.environmental@intertek.com](mailto:indo.environmental@intertek.com)



[intertek.com/minerals/environmental](http://intertek.com/minerals/environmental)

**intertek**  
Total Quality. Assured.