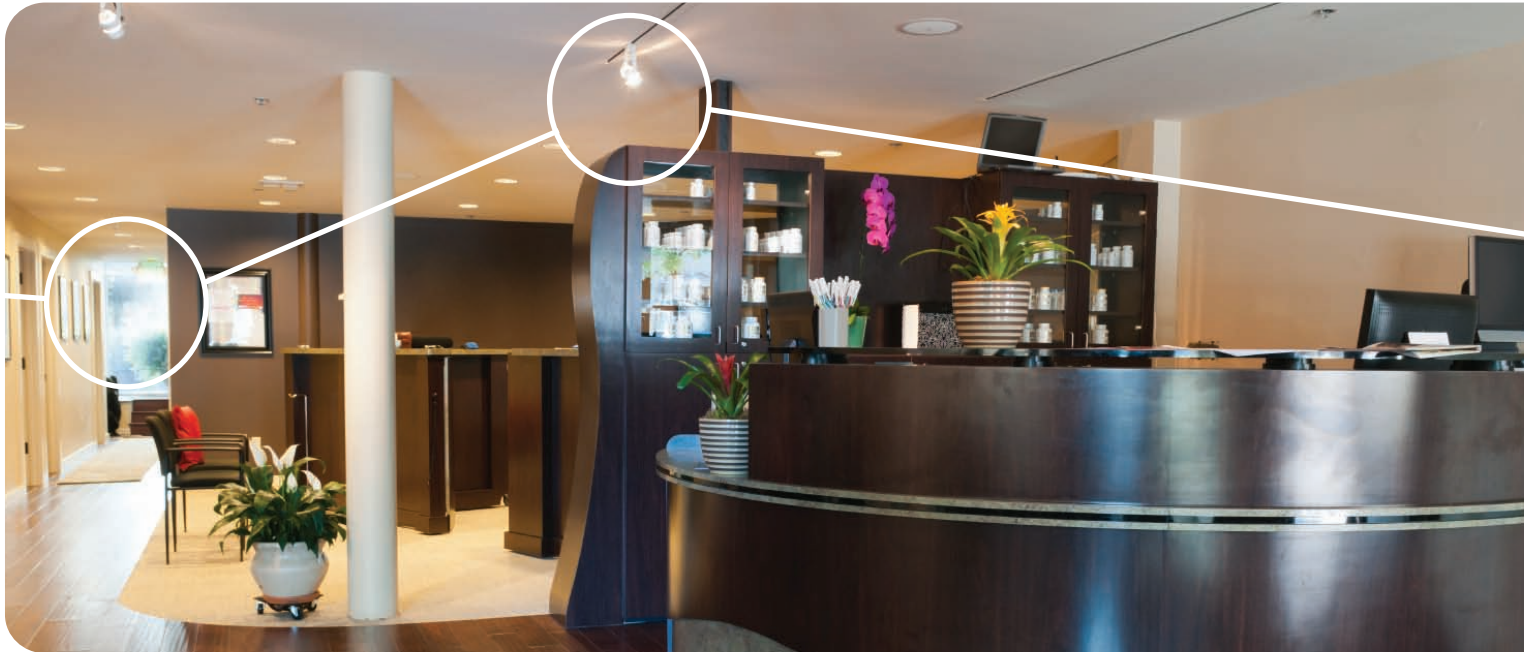


# Energy Audit



Rapidly rising energy prices have led countless companies to make energy efficiency an integral part of their sustainability strategy.

Operators of office buildings, retail chains, industrial sites, residential buildings and schools are faced with the challenge to analyze the primary sources of their energy consumption and expenses, and ways in which to reduce them and prevent energy leakages or waste.

The energy audit provided by Intertek is an external review of the energy consuming unit (existing building, processes), to identify actions which can lead to a decrease in energy consumption within a reasonable time period to realize a return on investment. Different scenarios are submitted and considered, based on each specific case, making the recommendations and conclusions accurate and reliable.

Intertek provides you with different options for energy audits, meeting your needs for energy management, while adapting to specific industry and country requirements:

- **Quick Scan – Simplified Energy Audit**
- **Global Energy Audit**
- **Building Envelope Audit**
- **Relighting Audit**

At Intertek, we go beyond testing, inspecting and certifying products; we help customers improve performance, gain efficiencies in manufacturing and logistics, overcome market constraints, and reduce risk. We've earned a reputation for helping our customers increase the value of their products, gain competitive advantage, and develop trusted brands. Whether your business is local or global, we can ensure your products meet quality, health, environmental, safety, and social accountability standards for virtually any market around the world. We hold extensive global accreditations, recognitions, and agreements, and our knowledge of and expertise in overcoming regulatory, market, and supply chain hurdles is unrivaled.

## The different steps of an energy audit

To conduct an energy audit, Intertek's auditors examine a variety of factors, including the building and its characteristics (age, number of floors, surface), occupancy, occupants' behavior, energy sources, equipment and performance. Based on these observations, auditors are able to identify maintenance, operation or building design failures. An energy report is produced which highlights detailed action priorities and evaluates the potential energy savings. The building and processes are modeled on computer software to analyze the impacts, which can then be benchmarked against the results of previously evaluated buildings.

Intertek can help you improve energy efficiency for all energy consuming processes: heating, cooling, lighting, production equipment, transportation, ventilation and more. Recommendations are classified by energy payback time and return on investment. Intertek capitalizes on existing knowledge and expertise to make suggestions for ways in which you can best use your energy devices and communicate new guidelines to stakeholders (site meetings, users and operators' awareness, posters creation, public information).

### Quick Scan – Simplified Energy Audit

A quick scan provides you with the initial recommendations of an on-site expert. The quick energy consumption analysis is used to answer the question: what are the main energy consuming contributors causing the majority of energy expenses? Intertek will concentrate on finding quick gains and provide tips on changing behaviors. The cost of the suggested changes will always be less than the projected return on investment. The quick scan is best for small businesses or sites with low energy expenses.

### Global Energy Audit

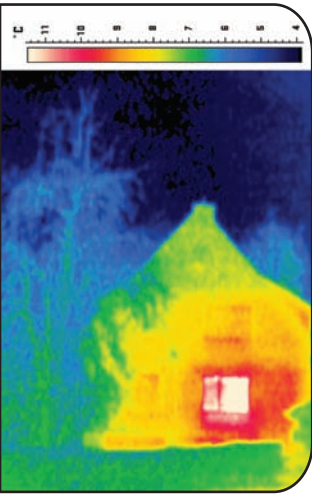
A Global Energy Audit is a comprehensive audit where Intertek will define a strategic investment plan and priority actions based on three-dimensional modeling and a focus on its consumption analyses. In this audit, Intertek will go further and deeper, providing a timeline for return on investment, identification of key areas for savings and on-site support during the entire process. This audit focuses on the building's structure and building's interior.

### Building Envelope Audit

The building envelope audit identifies key contributors to heating loss and opportunities for lower energy consumption. Intertek will audit the building's insulation to optimize its structure. This audit is tailored to your needs: it can be conducted within a short turnaround time or can be done with more detail for a longer time period. The benefits are in terms of both comfort and costs.

### Relighting Audit

The relighting audit focuses on lighting sources, and provides recommendations to lower the related energy consumption with respect to current standards. Intertek can support you during and after the change phase, as well as survey your consumers and end users. The benefits are in terms of both comfort and costs.



#### Testimonial



Roy Products, Belgium-based family business employing about one hundred people, is active in the field of interior design for over 75 years.

"We assigned to Intertek the production of an energy audit of our workshops and offices in 2008. It allowed us to structure an action plan on the management of energy and fuel, and implement it. We then ordered a complementary study with the aim to provide us with several investment scenarios for a better building isolation and a decrease in our energy consumptions. Tangible results have been seen since an investment plan was initiated, we will then extend our successful collaboration with Intertek."  
- Guy Vanroy, Roy Products Director

For more information, please visit [www.intertek.com](http://www.intertek.com), contact us at [contact.eis@intertek.com](mailto:contact.eis@intertek.com) or contact us at:

**Asia Pacific**  
Tel: +852 2173 8888  
Email: [eis.asia@intertek.com](mailto:eis.asia@intertek.com)

**North America**  
Tel: +1 630 481 3186  
Email: [eis.usa@intertek.com](mailto:eis.usa@intertek.com)

**Latin America**  
Tel: +1 305 513 3000  
Email: [eis.latam@intertek.com](mailto:eis.latam@intertek.com)

**Europe, Africa, Middle East**  
Tel: +33 2 32 09 36 36  
Email: [eis.europe@intertek.com](mailto:eis.europe@intertek.com)