



Vessel: M.V. EXAMPLE	Equipment: MAIN ENGINE
LR Number: 1234567	Manufacturer: MITSUBISHI
Client: EXAMPLE SHIPPING INC.	Model: 6UEC52LS
	Oil Grade: EXAMPLE OIL
	Oil Volume litres: 13000
	Fuel Grade: IFO 380

Sequential Results	Current	33	32	31	30		
LQS Reference	WTL06-00051	WTL05-01494	WTL05-01355	WTL05-00990	WTL05-00455		
Sampling Point	AFTER FILTER	AFTER FILTER	BEF FILTER	BEF FILTER	BEF FILTER		
Date Sampled	12.01.2006	09.12.2005	06.11.2005	03.08.2005	15.04.2005		
Date Dispatched	13.01.2006	13.12.2005	08.11.2005	17.08.2005	18.04.2005		
Dispatched From	HOUSTON	IMMINGHAM	IMMINGHAM	HOUSTON	IMMINGHAM		
Unit Service Hours	46140	45626	45001	43815	42298		
Oil Service Hours	46140	45626	45001	43815	42298		
Daily Make Up (ltrs)	50	60	20	50	2.56		

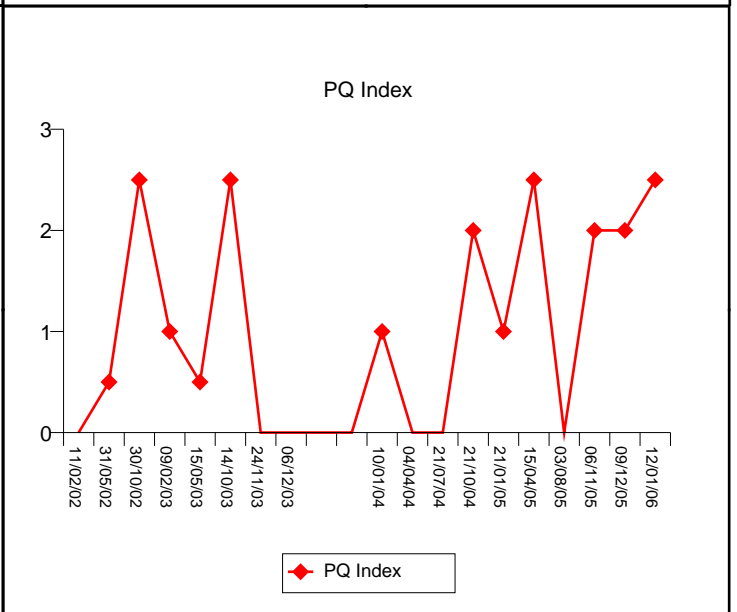
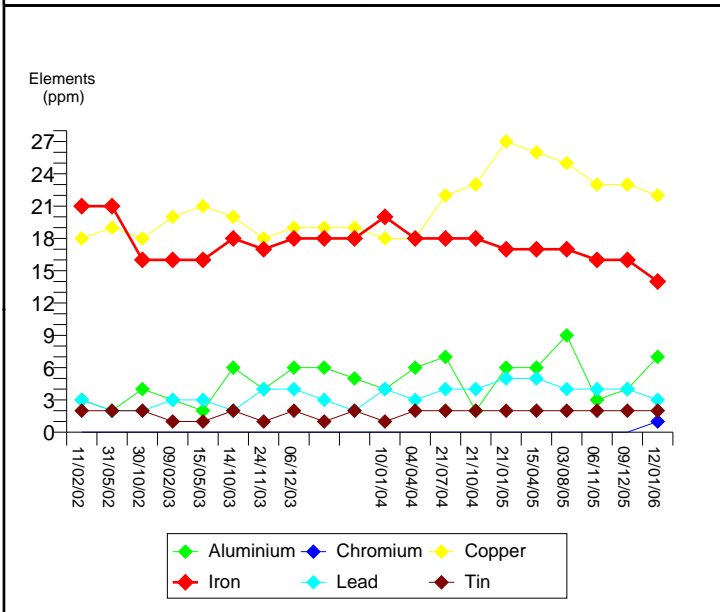
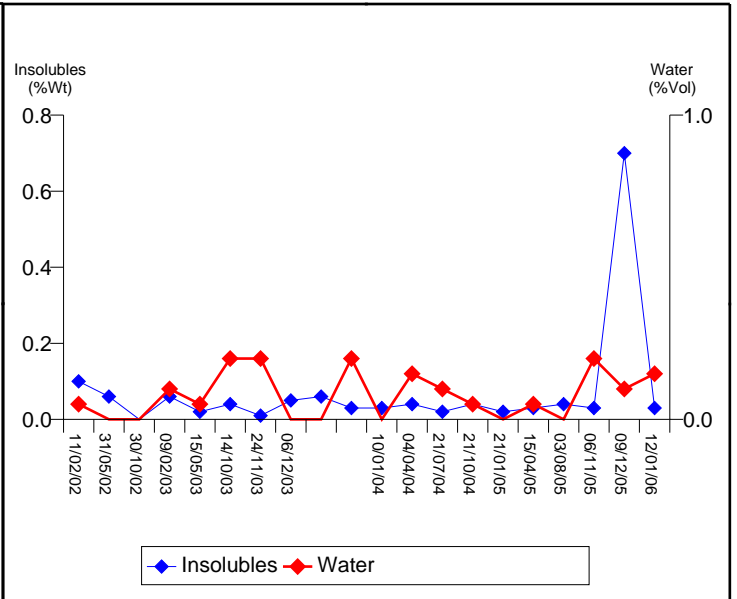
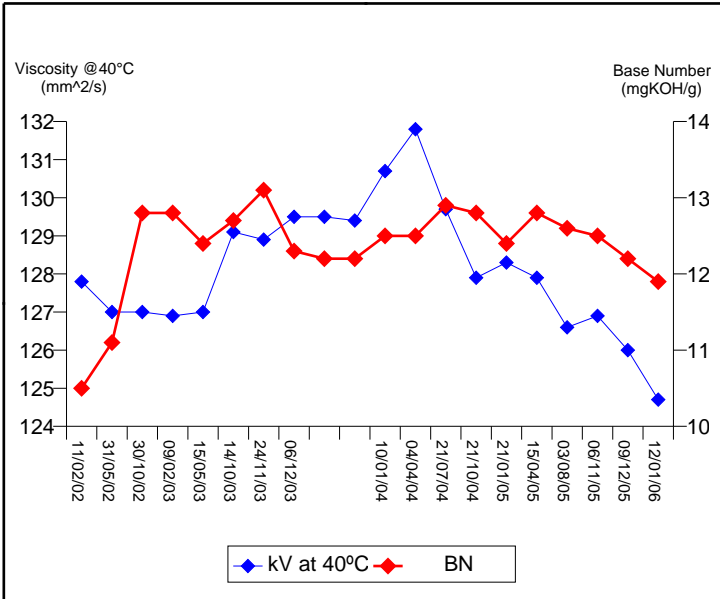
Analysis	Current	33	32	31	30	Manufacturer	New
Colour	BROWN	BROWN	BROWN	BROWN	BROWN		
Appearance	OPAQUE	OPAQUE	OPAQUE	OPAQUE	OPAQUE		
K Viscosity at 40oC cSt	124.7	126	126.9	126.6	127.9	+30/-10%	104
Flash Point oC	>200	>200	>200	>200	>200	>180	227
Water Content % (V/V)	0.15	0.1	0.2	<0.05	0.05	<0.2	
Nature of Water			Fresh				
Pentane Insolubles % (m/m)	0.03	0.7	0.03	0.04	0.03	<1%	
Base Number mgKOH/g	11.9	12.2	12.5	12.6	12.8		5
Sodium mg/kg	37	21	30	36	30		
Silicon mg/kg	5	5	6	6	7		
Magnesium mg/kg	27	27	27	29	28		
Zinc mg/kg	210	200	175	210	175		
Calcium mg/kg	6600	7500	7300	7300	7100		
Phosphorus mg/kg	154	158	155	168	153		
Aluminium mg/kg	7	4	3	9	6		
Chromium mg/kg	1	<1	<1	<1	<1		
Copper mg/kg	22	23	23	25	26		
Iron mg/kg	14	16	16	17	17		
Lead mg/kg	3	4	4	4	5		
Nickel mg/kg	7	9	9	9	9		
Tin mg/kg	2	2	2	2	2		
Vanadium mg/kg	24	26	29	31	29		
PQ Index /ml	2.5	2	2	0	2.5		

Oil Unit Rating	B/A	A/A	C/A	A/A	A/A		
-----------------	-----	-----	-----	-----	-----	--	--

Rating Key

A = Suitable for Further Service
 C = Remedial action required

B = Alert Levels
 D = Unsuitable Charge



Comments on the Current Sample:-

OIL RATING: The sample as tested contains a level of water which is within the engine manufacturer's recommended upper limit and a very low level of insolubles. Viscosity remains above the expected new oil value but is acceptable and the oil contains an adequate reserve of alkalinity. The oil is suitable for continued service, provided that water content does not increase.

UNIT RATING: Analysis of the wear and contaminant elements shows these to be at very stable levels. There is no evidence to suggest that any undue wear is taking place within the main engine system. The elements magnesium through to phosphorus are lubricant additives, nickel and vanadium are fuel related elements and have decreased.

This report is issued in support of the requirement for preventative maintenance in respect of clause 10 of the ISM Code (2002).

Next Sample: 12 April 2006

Report Date: 19 January 2006

Intertek Caleb Brett its affiliates and subsidiaries and their respective officers, employees or agents are, individually and collectively, referred to in this clause as the 'Intertek Group'. The Intertek Group assumes no responsibility and shall not be liable to any person for any loss, damage or expense caused by reliance on the information or advice in this document or howsoever provided, unless that person has signed a contract with the relevant Intertek Group entity for the provision of this information or advice and in that case any responsibility or liability is exclusively on the terms and conditions set out in that contract.



Lubricant Quality Scan
 Intertek Sunbury Technology Centre
 Unit A Shears Way, Brooklands Close
 Sunbury, Middlesex
 UK TW16 7EE
 Tel: +44 (0) 1932 732 161
lqs@intertek.com

Vessel: M.V. EXAMPLE	Equipment: STERNTUBE PORT
LR Number: 1234567	Manufacturer:
Client: EXAMPLE SHIPPING INC.	Model:
	Oil Grade: EXAMPLE OIL
	Oil Volume litre:

Sequential Results	Current	5	4	3	2		
LQS Reference	WTL06-00010	WTL05-01445	WTL05-01173	WTL05-00974	WTL05-00624		
Sampling Point	NOT STATED	NOT STATED	NOT STATED	NOT STATED	NOT STATED		
Date Sampled	02.01.2006	27.11.2005	04.10.2005	09.08.2005	29.05.2005		
Date Dispatched	03.01.2006	28.11.2005	04.10.2005	16.08.2005	30.05.2005		
Dispatched From	MAIDSTONE	BREMERHAVEN	DRAMMEN	BREMERHAVEN	BREMERHAVEN		
Unit Service Hours	64133	61629	60743	60120	58949		
Oil Service Hours		4591	3705		1911		
Daily Make Up (ltrs)			10l Total		0		

Analysis	Current	5	4	3	2	Manufacturer	New
Colour	YELLOW	YELLOW	YELLOW	YELLOW	YELLOW	AMBER	
Appearance	OPAQUE	CLOUDY	VIS IMPURS	CLEAR	VIS IMPURS	CLEAR	
K Viscosity at 40oC cSt	105.6	104	101.4	102.7	102.5	+25/-10%	100
Water Content % (V/V)	0.80	1.20	0.20	0.20	0.05	<1.0%	
Nature of Water	Brackish	Saline	Brackish	Fresh			
Pentane Insolubles % (m/m)	0.03	0.15	<0.01	0.02	<0.01	+0.15%	
Acid Number mgKOH/g	1	0.9	0.7	0.7	0.8	<1.0	0.5
SAN mgKOH/g	0	0	0	0	0		0
Sodium mg/kg	97	39	29	34	37	<80	
Silicon mg/kg	21	6	2	1	1	<40	
Magnesium mg/kg	7	2	1	<1	<1	<30	
Zinc mg/kg	2	1	<1	<1	1		
Calcium mg/kg	5	5	1	4	2		
Phosphorus mg/kg	650	700	650	650	550		
Aluminium mg/kg	<1	<1	<1	<1	<1		
Chromium mg/kg	<1	<1	<1	<1	<1	<10	
Copper mg/kg	3	2	1	<1	<1	<50	
Iron mg/kg	4	1	<1	<1	<1	<30	
Lead mg/kg	12	3	<1	1	2	<10	
Nickel mg/kg	<1	<1	<1	<1	<1	<10	
Tin mg/kg	7	4	1	3	4	<10	
PQ Index /ml	6	3	4.5	3	5		

Oil Unit Rating	B/B	C/A	A/A	A/A	A/A		
------------------------	-----	-----	-----	-----	-----	--	--

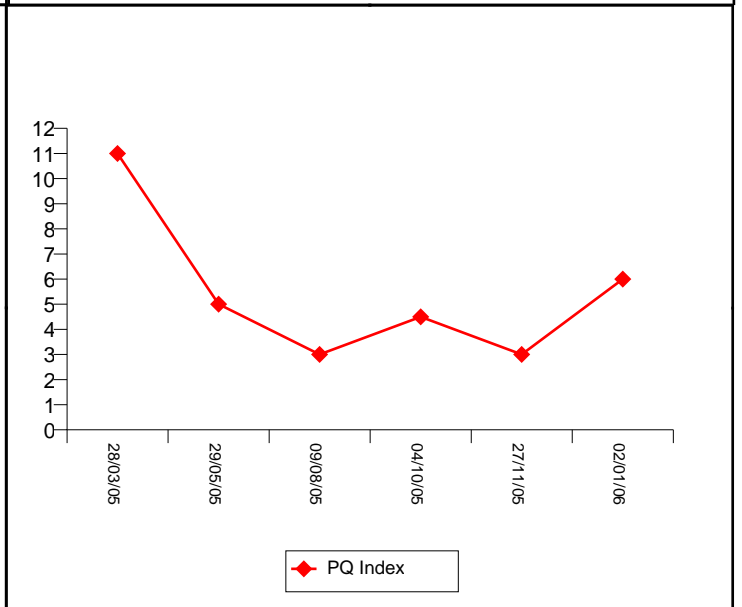
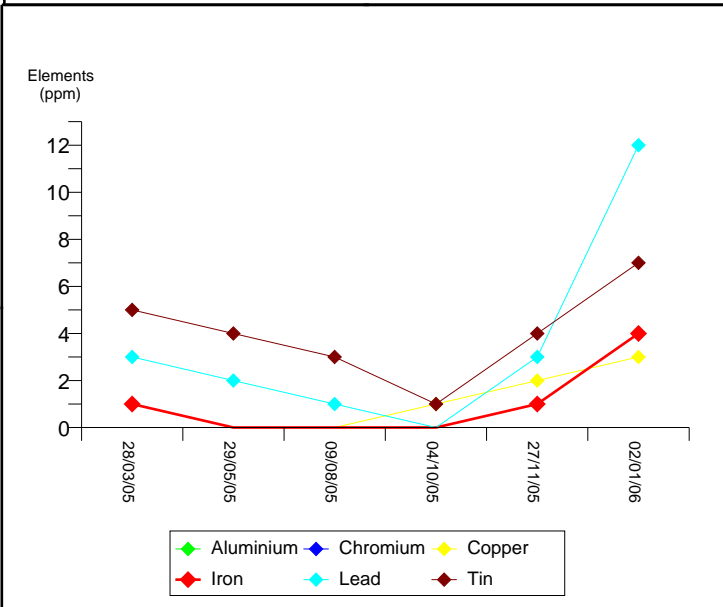
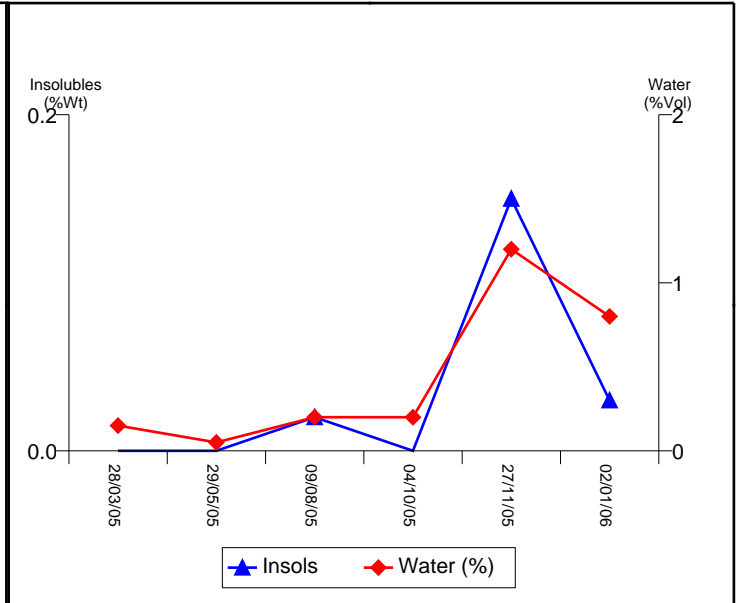
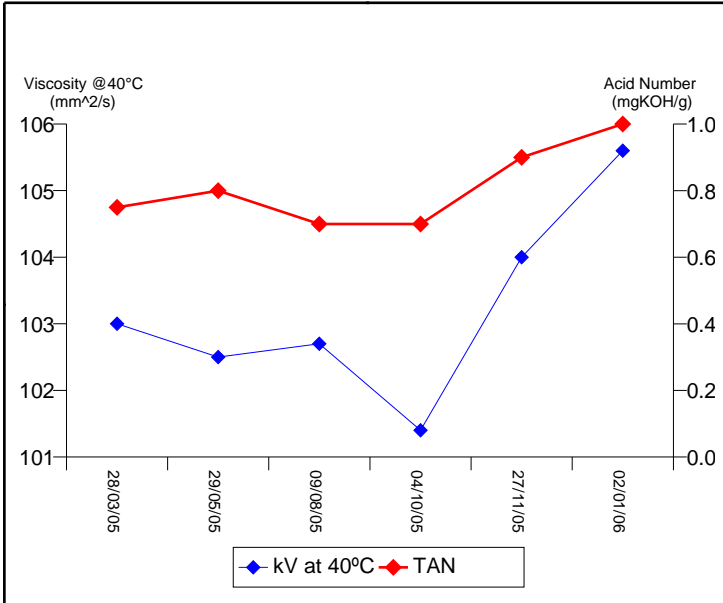
Rating Key

A = Suitable for Further Service
C = Remedial action required

B = Alert Levels
D = Unsuitable Charge

EXAMPLE SHIPPING INC.
M.V. EXAMPLE

STERN TUBE PORT



Comments on the Current Sample:-

OIL RATING: The sample as tested contains an acceptable level of water which is within IACS' guidelines operational limit. The sample also contains a very low level of insolubles, viscosity near the expected new oil value and there is little or no evidence of oxidation. The oil is suitable for continued service, provided water content does not increase.

UNIT RATING: Analysis of the wear and contaminant elements shows levels of lead and sodium now exceed IACS guidelines. However, there is no evidence to suggest that any undue wear of the sterntube components is taking place. The elements zinc through to phosphorus are lubricant additives.

RECOMMENDATION: Regularly drain any free water to ensure the oil charge remains suitable for continued service.

This report is issued in support of the requirement for preventative maintenance in respect of clause 10 of the ISM Code (2002).

Next Sample: 02 April 2006

Report Date: 09 January 2006

Intertek Caleb Brett its affiliates and subsidiaries and their respective officers, employees or agents are, individually and collectively, referred to in this clause as the 'Intertek Group'. The Intertek Group assumes no responsibility and shall not be liable to any person for any loss, damage or expense caused by reliance on the information or advice in this document or howsoever provided, unless that person has signed a contract with the relevant Intertek Group entity for the provision of this information or advice and in that case any responsibility or liability is exclusively on the terms and conditions set out in that contract.